

# ***Remote Commander***

---

## Operating Instructions

## Owner's Record

The model and serial numbers are located on the rear panel. Record the serial number in the space provided below. Refer to them whenever you call upon your Sony dealer regarding this product.

Model No. \_\_\_\_\_ Serial No. \_\_\_\_\_

***RM-PP505L***

## Precautions

### **On safety**

Should any solid object or liquid fall into the cabinet, unplug the receiver and have it checked by qualified personnel before operating it any further.

### **On operation**

Before connecting other components, be sure to turn off and unplug the receiver.

### **On cleaning**

Clean the cabinet, panel and controls with a soft cloth slightly moistened with a mild detergent solution. Do not use any type of abrasive pad, scouring powder or solvent such as alcohol or benzine.

If you have any question or problem concerning your remote, please consult your nearest Sony dealer.

## About this manual


The instructions in this manual are for model RM-PP505L. Check your model number by looking at the lower right corner of the front side.

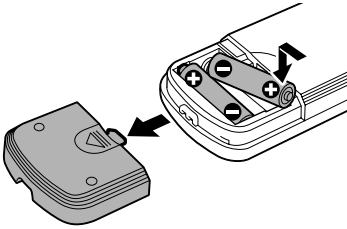
## Before you use your remote

Check that you received the following item with the remote:

R6 (size-AA) batteries (2)

### Inserting batteries into the remote

Insert two R6 (size-AA) batteries with the + and – properly oriented in the battery compartment. When using the remote, point it at the remote sensor  on the receiver.



#### Tip

Under normal conditions, the batteries should last for about 6 months. When the remote no longer operates the receiver, replace both batteries with new ones.

#### Notes

- Do not leave the remote in an extremely hot or humid place.
- Do not use a new battery with an old one.
- Do not expose the remote sensor of the receiver to direct sunlight or lighting apparatuses. Doing so may cause a malfunction.
- If you don't use the remote for an extended period of time, remove the batteries to avoid possible damage from battery leakage and corrosion.

## Table of Contents

---

### Location of Parts and Basic Remote Operations

Parts description .....	4
Table of buttons that you can use to control each component .....	9

---

### Advanced Remote Operations

Programming the remote .....	10
Learning the commands of your components .....	13
Performing several commands in sequence automatically (Macro Play) .....	14
Selecting the mode of the remote .....	15

---

### Additional Information

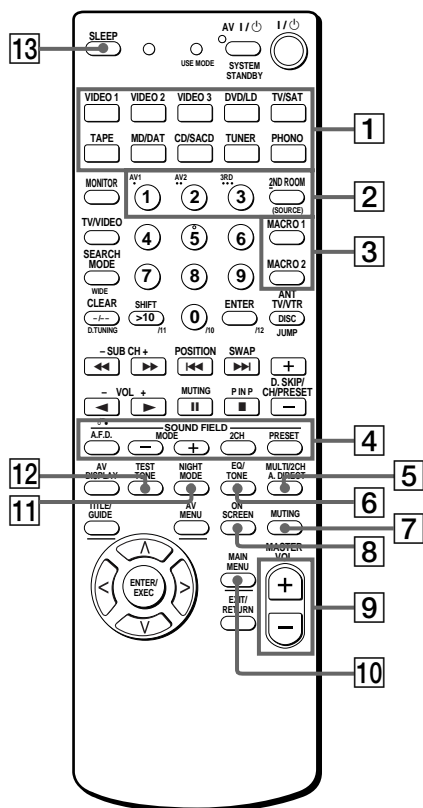
Troubleshooting .....	Back cover
Specifications .....	Back cover

This chapter provides information on the location of buttons and how to use them to perform basic operations.

However, some functions explained in this section may not work depending on the model of the receiver.

For the functions of the receiver you purchased, refer to the Operating Instructions supplied with the receiver.

## Parts description



### 1 Function buttons

Press one of the buttons to select the component you want to use. When you press a button, the receiver turns on. The components are factory assigned to the buttons as follows. When you want to assign other components, program the remote following the steps on page 10.

Button(s) component(s)	Assigned
VIDEO1	VCR (VTR mode 3)
VIDEO2	VCR (VTR mode 1)
VIDEO3	VCR (VTR mode 2)
DVD/LD	DVD player
TV/SAT	TV tuner
TAPE	Tape deck
MD/DAT	MD deck
CD/SACD	CD player
TUNER	Built-in tuner
PHONO	Turntable

See the table on page 9 for information on the buttons that you can use to control each component.

Note that the function buttons are factory-set as described in the table above. If you want to change the factory setting of the buttons to match your particular components, do the procedure “Programming the remote” on page 10.

**2 Remote mode buttons**

Press to select the mode of the remote (page 15).

**3 MACRO 1, 2 buttons**

Press to use Macro Play function (page 14).

**4 SOUND FIELD buttons****A.F.D. button**

Press to set the receiver to automatically select the appropriate sound field for the input signal.

This button can be used only with receivers that have digital inputs.

**MODE +/- button**

Press to select sound fields.

**2CH button**

Press to turn the sound field off and listen to 2 channel stereo sound.

Multi channel source is also downmixed to a 2 channel stereo sound.

**PRESET button**

Press to select CINEMA STUDIO A, B, or C, etc.

**5 MULTI/2CH A. DIRECT button**

Press to select the multi channel input sources.

**6 EQ/TONE button**

Press to turn the tone effect on or off.

Note that if you have adjusted the tone using the MAIN MENU button and cursor buttons, the adjusted tone will be produced whenever you turn on the tone effect.

**7 MUTING button**

Press to mute the sound.

**8 ON SCREEN button**

Press to display the menus of the receiver on the TV screen.

**9 MASTER VOLUME +/- buttons**

Press to adjust the volume level of all speakers at the same time.

**10 MAIN MENU button**

Press to select the cursor mode of the receiver (LEVEL, SURROUND, or EQ).

**11 NIGHT MODE button**

Press to select NIGHT MODE.

**12 TEST TONE button**

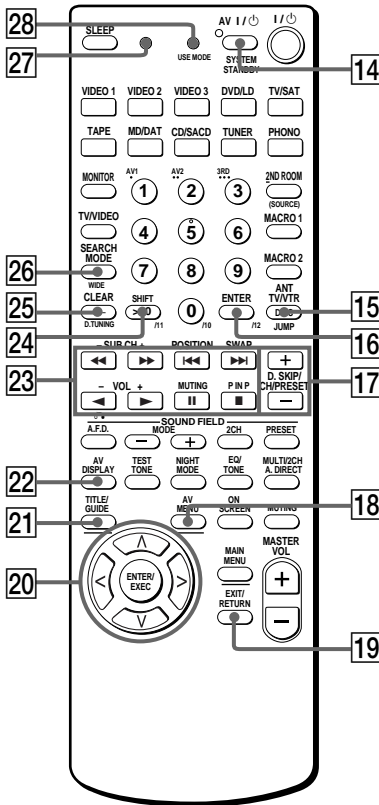
Press to output a test tone.

**13 SLEEP button**

Press repeatedly to activate the sleep function and the duration which the receiver turns off automatically.

continued

## Parts description (continued)



### 14 AV I/O switch

Press to turn the selected audio and video components under the function button, on or off.

If you press the I/O switch at the same time, it will turn off the main component and other Sony audio/video components (**SYSTEM STANDBY**).

#### Note

The function of the AV I/O switch changes automatically each time you press the function buttons (1). Depending on the component, the above operation may not be possible or may operate differently than described.

### 15 ANT TV/VTR / DISC button\*

Press repeatedly to select the signal to be output from the antenna terminal of the VCR (TV signal or video signal). With a CD player, press to select discs (mega storage CD player only).

### 16 ENTER button

Press to enter the selection.

### 17 D.SKIP/CH/PRESET +/- buttons\*

If you selected tuner:

Press to scan and select preset stations.

If you selected TV, VCR, or SAT:

Press to select preset channels.

If you selected CD player:

Press to skip discs (CD player with multi-disc changer only).

### 18 AV MENU button

Press to display the menus of the VCR, satellite tuner, or DVD.

### 19 EXIT/RETURN button

After pressing the MAIN MENU, AV MENU, or TITLE GUIDE button, press to return to the previous menu or exit the menu.

\* The function of these buttons switch automatically each time you press the function buttons (1). The above explanation is intended to serve as an example only. Therefore, depending on the component, the above operation may not be possible or may operate differently than described.

**20 Cursor buttons (▲/▼/◀/▶), ENTER/ EXEC button**

After pressing the MAIN MENU, AV MENU, or TITLE/GUIDE button, use the cursor buttons to make specific settings, then press the ENTER/EXEC button to enter the selection.

**21 TITLE/GUIDE button\***

Press to display DVD titles or guide menus.

**22 AV DISPLAY button**

Press to select the information displayed on the TV screen.

**23 Operation buttons\***

The following table describes the component operated by each button and the function of the buttons. See the table on page 10 for information on the buttons that you can use to control each component.

Button(s)	Function
⏮/⏭	Skips tracks.
⏪/⏩	Fast forwards or rewinds.
⏴/⏵	Searches tracks in the forward or backward direction.
◀	Starts play on the reverse side of the cassette.
▶	Starts play. (Starts play on the front side of the cassette.)
⏸	Pauses play or recording or starts recording when the component is in recording standby.
■	Stops play.

**24 SHIFT / >10 button\***

**If you selected tuner:**

Press repeatedly to select a memory page for presetting radio stations or tuning to preset stations.

**If you selected VCR, TV, LD player, tape deck, MD deck, or CD player:**

Press before inputting a channel or track number of eleven or higher.

**25 CLEAR / -/- / D.TUNING button\***

**If you selected DVD player:**

Press if you made a mistake when you press the numeric buttons.

**If you selected TV or VCR:**

Press to select the channel entry mode, either one or two digit.

**26 SEARCH MODE button**

Press to select the search mode of DVD player.

**27 Indicator\***

Lights up whenever any button on the remote is pressed.

**28 USE MODE button**

Use to program the remote.

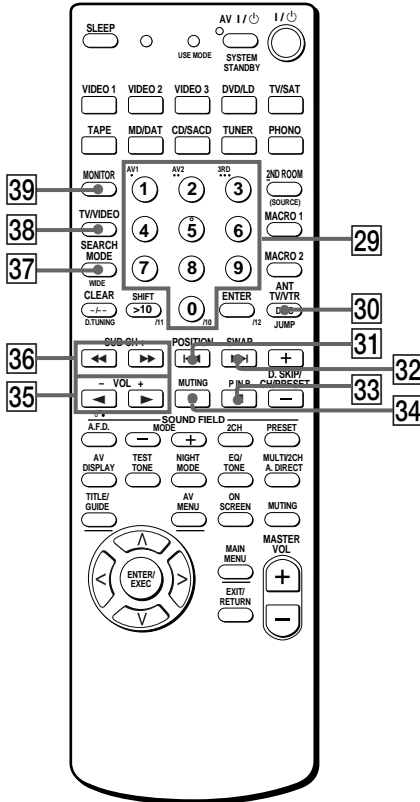
\* The function of these buttons switch automatically each time you press the function buttons (1). The above explanation is intended to serve as an example only. Therefore, depending on the component, the above operation may not be possible or may operate differently than described.

continued

## Parts description (continued)

### TV operation

After pressing the MONITOR button, the button lights up and you can use the following buttons to operate TV.



#### 29 Numeric buttons (1 to 0)\*

Press to select channel numbers.

#### 30 JUMP button

Press to toggle between the previous and the current channels.

#### 31 POSITION button

Press to change the position of the small picture\*\*.

#### 32 SWAP button

Press to swap the small and large pictures\*\*.

#### 33 P IN P button

Press to activate the picture-in-picture function\*\*.

#### 34 MUTING button

Press to mute the sound.

#### 35 VOLUME +/- buttons

Press to adjust the volume of TV.

#### 36 SUB CH +/- buttons

Press to change the sub channel selection.

#### 37 WIDE button

Press to switch the TV to the wide mode.

#### 28 TV/VIDEO button

Press to select the TV input signal.

#### 39 MONITOR button

Press to active TV control buttons. The button lights up. Press again to restore original category.

\* The function of these buttons switch automatically each time you press the function buttons (1). The above explanation is intended to serve as an example only. Therefore, depending on the component, the above operation may not be possible or may operate differently than described.

\*\*Only with Sony TVs with the picture-in-picture function.



## Table of buttons that you can use to control each component

Component	CD player	DAT deck	MD deck	Tape deck (A and B)	LD player	VCR	TV	Satellite tuner/ Cable box	Video CD player	DVD player
AV I/⏪	●	●	●		●	●	●	●	●	●
Numeric buttons	●	●	●	●	●	●	●	●	●	●
SHIFT >10	●		●	●	●	●	●		●	
◀				●						
VOL -							●			
↶ (Return)					●				●	●
▶	●	●	●	●	●	●			●	●
VOL +							●			
⏸	●	●	●	●	●	●			●	●
MUTING							●			
■	●	●	●	●	●	●			●	●
⏮/⏭	●	●	●	●**	●	●			●	●
⏪/⏩	●	●	●	●	●	●			●	●
SUB CH +/-							●			
D.SKIP	●*		●						●	●*
CH/PRESET +/-						●	●	●		
ANT TV/VTR						●				
DISC	●*								●	
CLEAR										●
-/-- D.TUNING						●	●			
AV MENU						●		●		●
TITLE/GUIDE								●		●
Cursor buttons						●		●		●
ENTER/EXEC						●		●		●
EXIT/RETURN					●	●		●	●	●
AV DISPLAY					●	●	●	●	●	●
TV/VIDEO							●			
SEARCH MODE										●

\* With a multi-disc changer only.

\*\* B deck only.

This chapter describes how to change the factory setting of a function button and how to set the remote to control non-Sony components.

### Programming the remote

You can program the remote to control non-Sony components by changing the code. Once the control signals have been memorized, you can use those components as part of your system.

Furthermore, you can also program the remote for Sony components that the remote is unable to control. Note that the remote can only control components that accept infrared wireless control signals.

#### Note

When you assign a component to the MONITOR button, you can operate the programmed component without changing the function of the receiver.

#### 1 Press AV I/ while pressing down USE MODE.

The indicator lights.

#### 2 Press the function button (including MONITOR) for the component you want to control.

For example, if you are going to control a CD player, press CD.

#### 3 Press the numeric buttons to enter the numeric code (or one of the codes if more than one code exists) corresponding to the component and the maker of the component you want to control.

See the tables on pages 11 and 12 for information on the numeric code(s) corresponding to the component and the maker of the component (the first digit and the last two digits of the numeric code correspond to the category and the maker's code respectively.)

#### 4 Press ENTER.

Once the numeric code has been verified, the indicator slowly lights twice and the remote automatically exits the programming mode.

#### 5 Repeat steps 1 to 4 to control other components.

#### To cancel programming

Press USE MODE during any step. The remote automatically exits the programming mode.

#### Tips

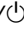

- If programming is unsuccessful, check the following:
  - If the indicator does not light up in step 1, the batteries are weak. Replace both batteries.
  - If the indicator lights 4 times in quick succession while entering the numeric code, an error has occurred. Start again from step 1.
- To activate the function after programming, press the programmed button to activate the function you want.

#### Notes

- The indicator turns off while a valid button is pressed.
- In step 2, if several function buttons are pressed, only the last pressed button is valid.
- In step 3, if a function button is pressed, the new function is selected and the programming procedure returns to the beginning of step 3.
- For the numeric codes, only the first three numbers entered are valid.

#### To clear the memory of the remote

To clear all programmed and learned signals, do the following to reset the remote to factory settings.

Press I/, AV I/ and MASTER VOL – at the same time.

The indicator lights 3 times, then goes off.

## The numeric codes corresponding to the component and the maker of the component

Use the numeric codes in the tables below to control non-Sony components and also Sony components that the remote is normally unable to control. Since the remote signal that a component accepts differs depending on the model and year of the component, more than one numeric code may be assigned to a component. If you fail to program your remote using one of the codes, try using other codes.

### Notes

- The numeric codes are based on the latest information available for each brand. There is a chance, however, that your component will not respond to some or all of the codes.
- All of the functions on this remote may not be available when used with your particular component.

### To control a CD player

Maker	Code(s)
SONY	101, 102, 103
DENON	104, 123
JVC	105, 106, 107
KENWOOD	108, 109, 110
MAGNAVOX	111, 116
MARANTZ	116
ONKYO	112, 113, 114
PANASONIC	115
PHILIPS	116
PIONEER	117
TECHNICS	115, 118, 119
YAMAHA	120, 121, 122

### To control a DAT deck

Maker	Code(s)
SONY	203
PIONEER	219

### To control an MD deck

Maker	Code(s)
SONY	301
DENON	302
JVC	303
KENWOOD	304

### To control a tape deck

Maker	Code(s)
SONY	201, 202
DENON	204, 205
KENWOOD	206, 207, 208, 209
NAKAMICHI	210
PANASONIC	216
PHILIPS	211, 212
PIONEER	213, 214
TECHNICS	215, 216
YAMAHA	217, 218

### To control an LD player

Maker	Code(s)
SONY	601, 602, 603
PIONEER	606

### To control a video CD player

Maker	Code(s)
SONY	605

continued

## Programming the remote (continued)

### To control a VCR

Maker	Code(s)
SONY	701, 702, 703, 704, 705, 706
AIWA	710, 750, 757, 758
AKAI	707, 708, 709, 759
BLAUPUNKT	740
EMERSON	711, 712, 713, 714, 715, 716, 750
FISHER	717, 718, 719, 720
GENERAL ELECTRIC	721, 722, 730
GOLDSTAR	723, 753
GRUNDIG	724
HITACHI	722, 725, 729, 741
ITT/NOKIA	717
JVC	726, 727, 728, 736
MAGNAVOX	730, 731, 738
MITSUBISHI/MGA	732, 733, 734, 735
NEC	736
PANASONIC	729, 730, 737, 738, 739, 740
PHILIPS	729, 730, 731
PIONEER	729
RCA/PROSCAN	722, 729, 730, 731, 741, 747
SAMSUNG	742, 743, 744, 745
SANYO	717, 720, 746
SHARP	748, 749
TELEFUNKEN	751, 752
TOSHIBA	747, 755, 756
ZENITH	754

### To control a DVD player

Maker	Code(s)
SONY	401
PANASONIC	402, 406
PHILIPS	407
PIONEER	403
TOSHIBA	404
DENON	405

### To control a TV

Maker	Code(s)
SONY	501
DAEWOO	504, 505, 506, 507, 515, 544
FISHER	508
GOLDSTAR	503, 511, 512, 515, 534, 544
GRUNDIG	517, 534
HITACHI	513, 514, 515, 544
ITT/NOKIA	521, 522
JVC	516
MAGNAVOX	503, 518, 544
MITSUBISHI/MGA	503, 519, 544
NEC	503, 520, 544
PANASONIC	509, 524
PHILIPS	515, 518
PIONEER	509, 525, 526, 540
RCA/PROSCAN	510, 527, 528, 529, 544
SAMSUNG	503, 515, 531, 532, 533, 534, 544
SANYO	508, 545
SHARP	535
TELEFUNKEN	523, 536, 537, 538
THOMSON	530, 537, 539
TOSHIBA	535, 540, 541
ZENITH	542, 543

### To control a satellite tuner or cable box

Maker	Code(s)
SONY	801, 802, 803
JERROLD/G.I.	806, 807, 808, 809, 810, 811, 812, 813, 814
PANASONIC	818
RCA	804, 805
S. ATLANTA	815, 816, 817

## Learning the commands of your components

By using the Learning function, it is possible for this remote to perform learned commands.

### Setting remote control codes that are not stored in the remote

When a remote control code is not one of the presets stored in the remote, it is possible for the remote to learn the code using the Learning function.

#### 1 Press SLEEP while pressing down USE MODE.

The indicator lights.

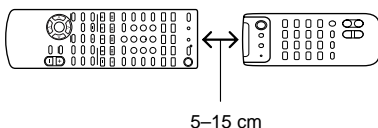
#### 2 Press the function button for the component you want to learn functions for.

For example, if you are going to learn an operation for a CD player, press CD.

#### 3 Press the button you want to use for the Learning function.

The indicator turns off while a valid button is pressed, then blinks slowly.

#### 4 Point the remote control code receiver section of the remote toward the receiver/transmitter on the remote control to be learned.



#### 5 Press the appropriate button on the remote control to be learned to send the remote button code.

Lightly pressing the button once should be sufficient.

If learning is completed successfully, the indicator slowly lights twice and the remote automatically exits the learning mode.

If the memory of the remote is already full, the indicator flashes 8 times in quick succession and the remote automatically exits the learning mode.

When learning is not completed successfully, the indicator lights 4 times in quick succession and the procedure returns to step 5.

#### Notes

- You can program up to 80 buttons for the Learning function. In some cases, you may not be able to program even if you have not programmed 80 buttons.
- In steps 2 and 3, the indicator turns off while a valid button is pressed.
- In step 3, if several buttons that can be used for learning are pressed, only the last pressed button is valid.
- In step 5, if a button that can be used for learning is pressed, the new button is selected and the learning procedure returns to the beginning of step 5.
- You can use TV/VIDEO only for the MONITOR function.

#### To cancel learning

Press USE MODE during any step. The remote automatically exits the learning mode.

#### To clear the learned codes

Start over from step 1. After step 3, press SLEEP for more than 2 seconds. The indicator lights twice slowly and the learned code is cleared.

When a learned code is cleared, if the button was previously programmed for another function, the programmed code for that button can be used.

continued

## Learning the commands of your components (continued)

### To clear the memory of the remote

To clear all programmed and learned signals, do the following to reset the remote to factory settings.

Press **I/⏪**, **AV I/⏪**, and **MASTER VOL –** at the same time.

The indicator lights 3 times, then goes off.

### To use a command that has been learned

When selecting a learned function, press the learned button for that function.

## Performing several commands in sequence automatically (Macro Play)

The Macro Play function lets you link several IR codes in a sequential order as a single command. The remote provides 2 macro lists (MACRO1 and 2). You can specify up to 10 IR codes for each macro list.

### Setting the sequence of IR codes

#### 1 Press MACRO1 (or MACRO2) while pressing down USE MODE.

The indicator lights.

#### 2 Press the numeric buttons to select the macro step number.

For example, to program step 1, press 1.

#### 3 Press the button you want to program.

**To program the operation (IR code) of a component connected to the receiver, press the function button (including MONITOR) first, then press the button for the operation.**

For example, to play the CD player, press CD, then press **▷**.

When programmed successfully, the indicator lights twice slowly, then the remote automatically exits the macro setting mode.

**To program the operation (IR code) of the receiver, press the button for the operation.**

Buttons that can be programmed:

SLEEP, **I/⏪**, 2ND ROOM, A.F.D., MODE +/-, 2CH, PRESET, TEST TONE, NIGHT MODE, EQ, MULTI/2CH A. DIRECT, ON SCREEN, MUTING, MAIN MENU, MASTER VOL +/-

When programmed successfully, the indicator lights twice slowly, then the remote automatically exits the macro setting mode.

#### 4 Repeat steps 1 through 3 to program up to 10 IR codes.

#### Tip

- To program a function switch, press the same function button twice in step 3.
- If programming is unsuccessful, check the following:
  - If the indicator does not light up in step 1, the batteries are weak. Replace both batteries.
  - If the indicator lights 4 times in quick succession in step 3, an error has occurred. Start again from step 1.

#### Note

The indicator turns off while a valid button is pressed.

**To cancel programming**

Press USE MODE during any step. The remote automatically exits the macro setting mode.

**To delay the output of an IR code**

Start over from step 1. In step 3, press VIDEO 1, then MACRO1 or MACRO2. This allows you to specify 1 second delay before output the next IR code. Be sure not to press MACRO1 or MACRO2 for more than 2 seconds.

**To clear the programmed IR codes**

Clear each macro step individually.

- 1** Press MACRO1 or MACRO2 (in which the IR code you want to clear is programmed) while pressing down USE MODE.
- 2** Press the numeric button to select the macro step number you want to clear.
- 3** Press VIDEO 1.
- 4** Hold down MACRO1 or MACRO2 for more than 2 seconds.

The IR code is cleared. The indicator lights twice slowly, then the remote automatically exits the macro setting mode.

**To start macro play**

Press MACRO1 (or MACRO2).

**Note**

If the Macro Play function does not work properly, program a delay between each operation. See “To delay the output of an IR code”.

## Selecting the mode of the remote

Set the remote mode using the USE MODE button (28) and the remote mode buttons (2).

**Selecting the command mode**

You can switch the command mode (AV1 or AV2) of the remote. If the command mode of the receiver and the remote is different, you cannot use the remote to operate the receiver.

**Press 1 (AV1) (or 2 (AV2)) while pressing down USE MODE.**

The indicator lights once (twice for AV2), then the command mode switches.

**Setting to the 2nd room mode.**

You can use the remote to select the function for the 2nd room (2nd room mode). You can use the function buttons only for the 2nd room.

**Press 2ND ROOM while pressing down USE MODE.**

The indicator lights for a while, then the mode switches to the 2nd room mode.

**Tips**

- If you press a function button while pressing down 2ND ROOM, you can select the function for the 2nd room even though the mode is not set to the 2nd room mode.
- If you press 2ND ROOM only, you can output the source signal of the current function of the receiver to the amplifier in the 2nd room.

**Setting to the 3rd room mode.**

You can use the remote to select the function for the 3rd room and adjust the volume in the 3rd room (3rd room mode). During 3rd room mode, you can adjust the volume of speakers in another room when you set the receiver to output the sound using SPEAKER terminals. You can use the function buttons and MASTER VOL +/- buttons only.

**Press 3 (3RD) while pressing down USE MODE.**

The indicator lights 3 times, then the mode switches to the 3rd room mode.

**To check the mode of the remote**

Press USE MDOE. You can check the remote by the indicator.


Mode	Indicator lights
AV1	once
AV2	twice
2nd room	once (for a while)
3rd room	3 times

### Troubleshooting

If you experience any of the following difficulties while using the receiver, use this troubleshooting guide to help you remedy the problem. Should any problem persist, consult your nearest Sony dealer.

---

**The remote does not function.**

- Check the mode of the remote (page 15).
  - Point the remote at the remote sensor  on the receiver.
  - Remove any obstacles in the path between the remote and the receiver.
  - Replace both batteries in the remote with new ones, if they are weak.
  - Make sure you select the correct function on the remote.
- 

### Specifications

**General****Remote control system**

Infrared control

**Power requirements**

3 V DC with two R6 (size-AA) batteries

**Dimensions**

210 x 68 x 25 mm

**Mass (approx.)**

150 g excluding batteries

Design and specifications are subject to change without notice.